

**RI  
SE**

# EMPIR 18SIB08 ComTraForce

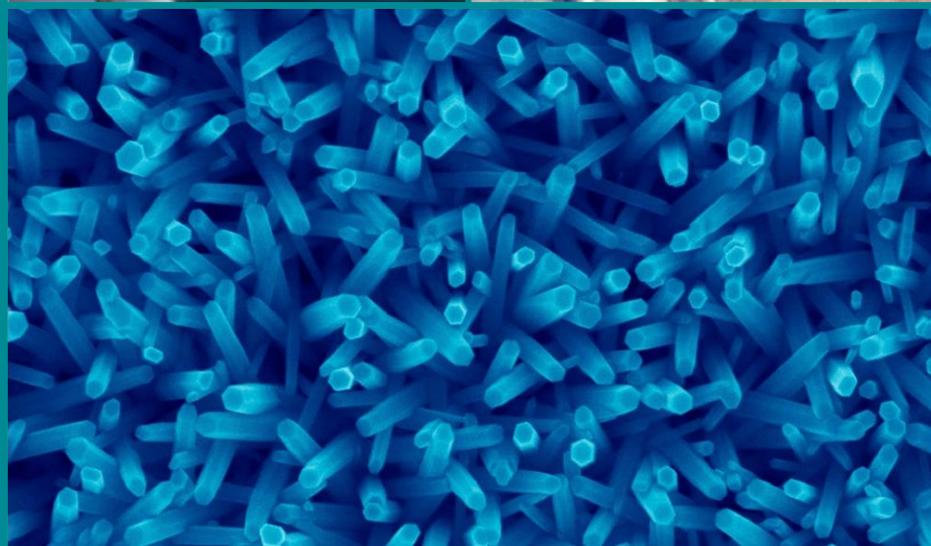
Comprehensive traceability for  
force metrology services

Mikolaj Wozniak

RISE Research Institutes of Sweden

Safety and Transport

Measurement Technology



## RISE in brief

- Present across the whole of Sweden. And beyond.
- 2,700 employees, 30 % with a PhD.
- Large proportion of customers are SME clients, accounting for approx. 30 % industry turnover.
- Runs 100s of test and demonstration facilities, open for industry, SMEs, universities and institutes (RISE is owner and partner in 60 % of all Sweden's T&D facilities).





Our vision  
An internationally leading partner for  
innovation

With our broad range of competencies and unique expertise, we create added value



Bioeconomy

Fire and safety



Cement and concrete



Certification



Circular economy



Design



Electronics



Energy and fuels



Packaging



Glass



Health and Care



ICT and telecoms



Agriculture and food



Chemistry, materials and surfaces



Life Science



Maritime



Mechanical engineering



Mechanics



Metrology and measurement technology



Paper and Pulp



Process development



Built environment



Safety



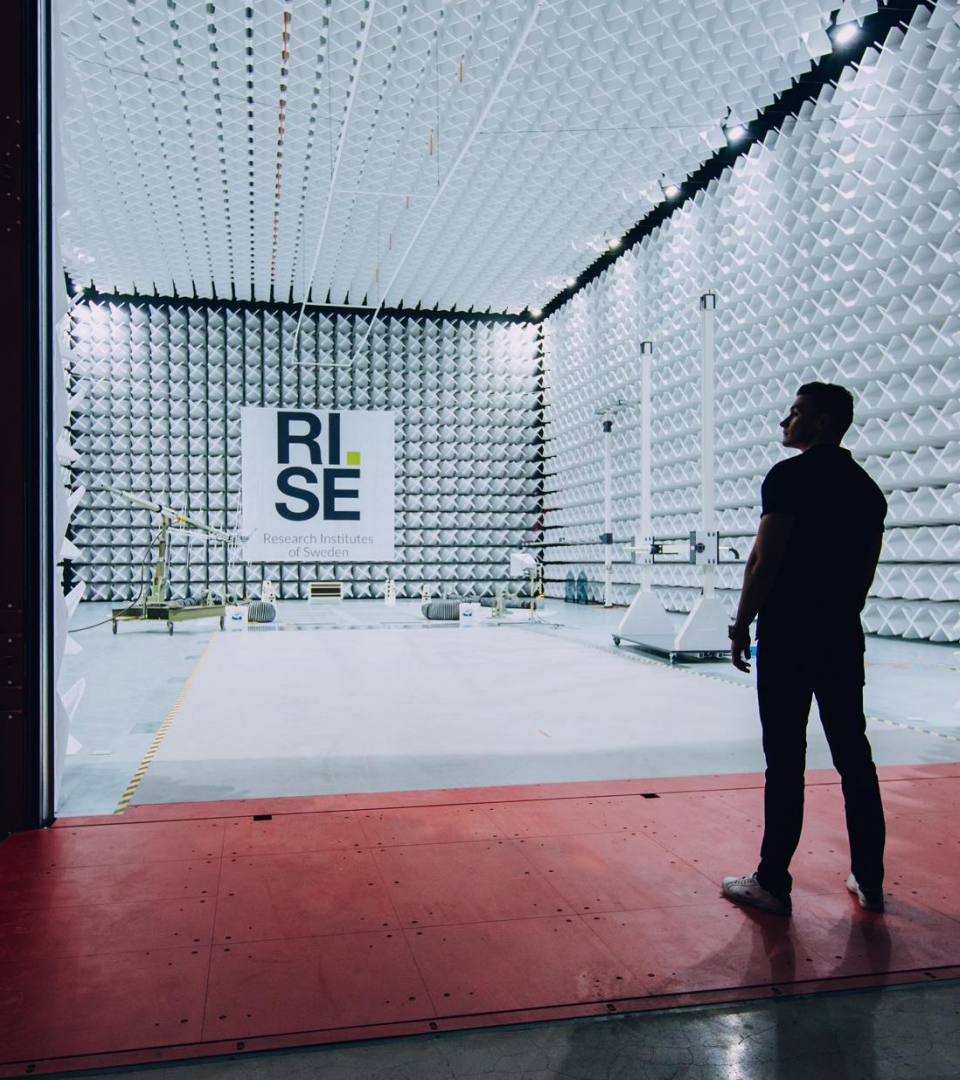
Mobility



Wood



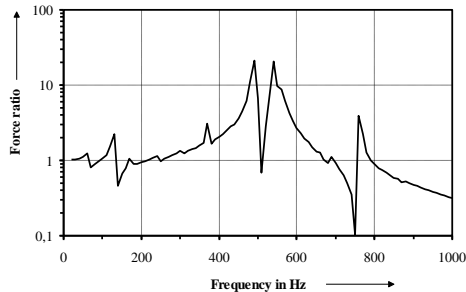
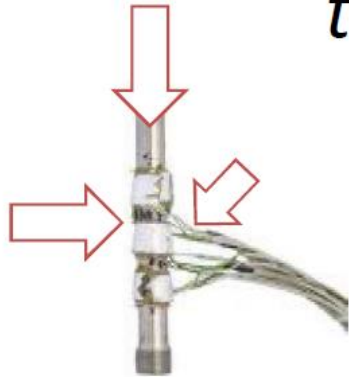
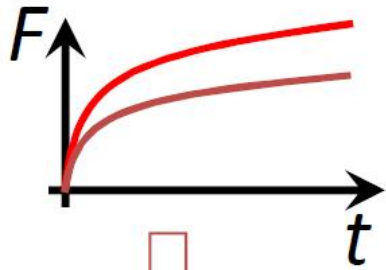
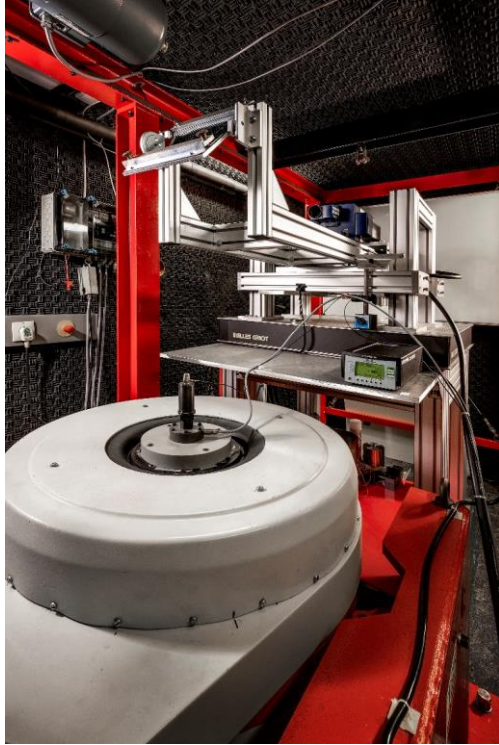
Water



## RISE as Swedish NMI

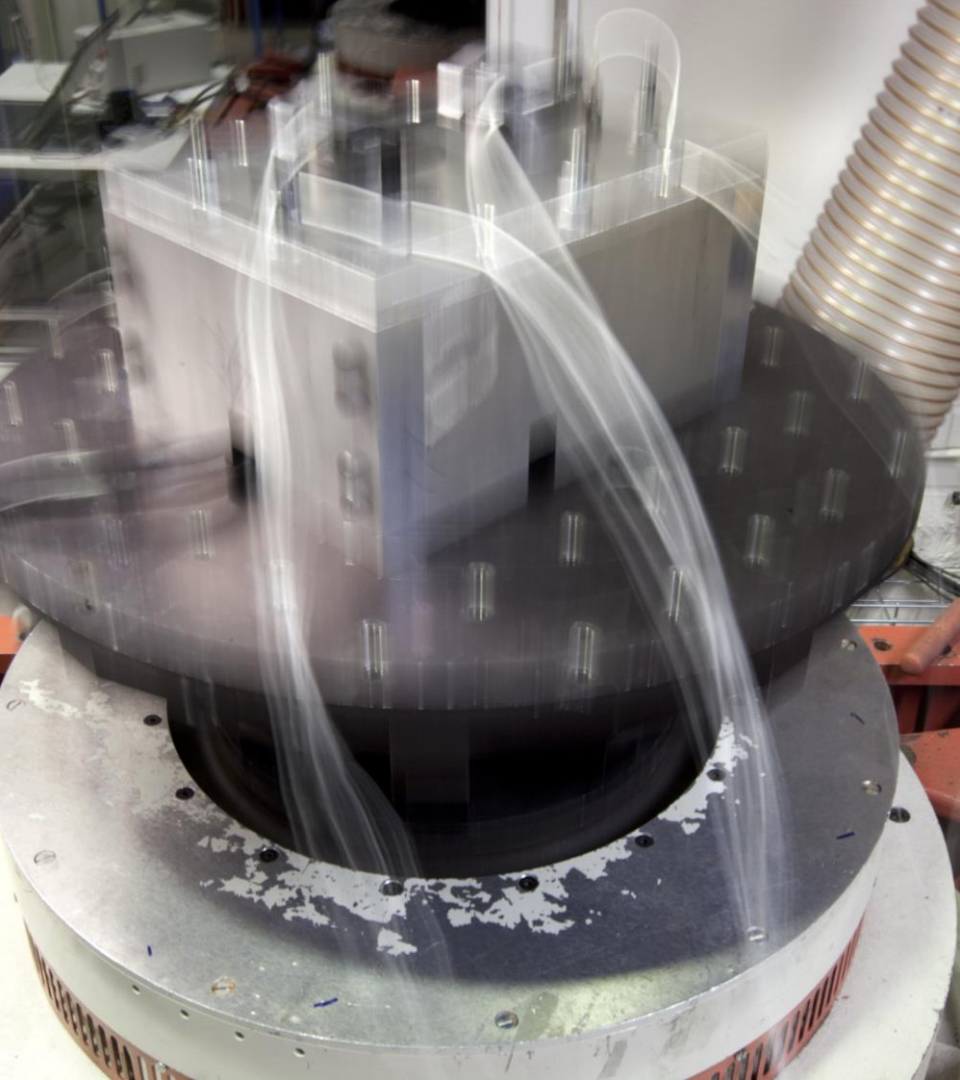
- National standards
- Calibration and traceability
- International cooperation
- EMPIR





## ComTraForce

- 3 years research project
- Consortium
- Addresses the need in industry
- Traceability for continuous, multi-component and dynamic force measurement
- Development of calibration methods
- Creating impact



# UTMIS

Utmattningsnätverket i Sverige  
[www.utmis.org](http://www.utmis.org)



- Traceability in dynamic force means more accurate and reliable fatigue testing
- Support letter
- Stakeholder?
- Calibration needs/requests?
- Accreditation in calibration/testing?

Thank you

Mikołaj Wozniak

mikolaj.wozniak@ri.se

+46 10 516 62 07